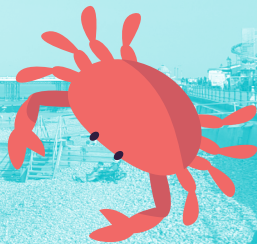


Cromer Crawl

A stroll around six seaside pubs



Whenever the weather is good, we all love to get to the coast, and luckily from Norwich the beautiful Norfolk coastline is easily accessible by train. North Norfolk also has the Coasthopper service run by Sanders, who offer a Day Pass allowing you to hop on and off their services between Wells and Cromer. We'll be writing about the opportunities this gives for a bus-based pub crawl in a future article, but here we're featuring the pubs of Cromer, the first coastal stop on the Bittern Line from Norwich, or the X44 bus.

From the station, the first pub you'll come across is the **White Horse**, in West Street, next door to Poppyland Brewery (check poppylandbrewery.com for opening times). A pretty white and blue building, the pub has two large bars, serving ales from Greene King, Adnams and Sharp's at our visit, and an enclosed patio garden with hanging baskets at the rear. Food is served every day and there are six en-suite rooms available for B&B.

Continuing into the centre towards the sea front, the **Wellington** is on pedestrianised Garden Street, and is a bright, high-ceilinged pub with pub games and sports on the TV, serving beers from Moon Gazer, Wolf and Adnams. Owned by the same family for over 20 years, there are four modern rooms available, and good value food is served in the Courtyard restaurant.

A stone's throw along the narrow High Street is the **Kings Head**, which has had a complete refurbishment over the last lockdown, and now boasts a large, modern bar in the fashionable muted blue

colours with exposed brick and reclaimed / stressed wood panelling. There's also a large suntrap patio garden with plenty of greenery, food is served all day and there's always something on, from quiz nights to karaoke, and a Pride night every Thursday. At our visit in September the ales available were London Pride, Doom Bar and Taylor's Landlord.



The Albion, a bright building in similar style to the Wellington is 200m away on Church Street. The pub had a £140,000 refurb just before the pandemic, when new owners took over, and is now serving food. The long single bar had beers from Adnams, Taylor's and Sharp's.

Opposite the Albion is **The Gangway**, a relatively new micropub in what was previously a hairdressers, with no draught real ale, but a huge range of bottled and canned craft beer and several keg taps. A





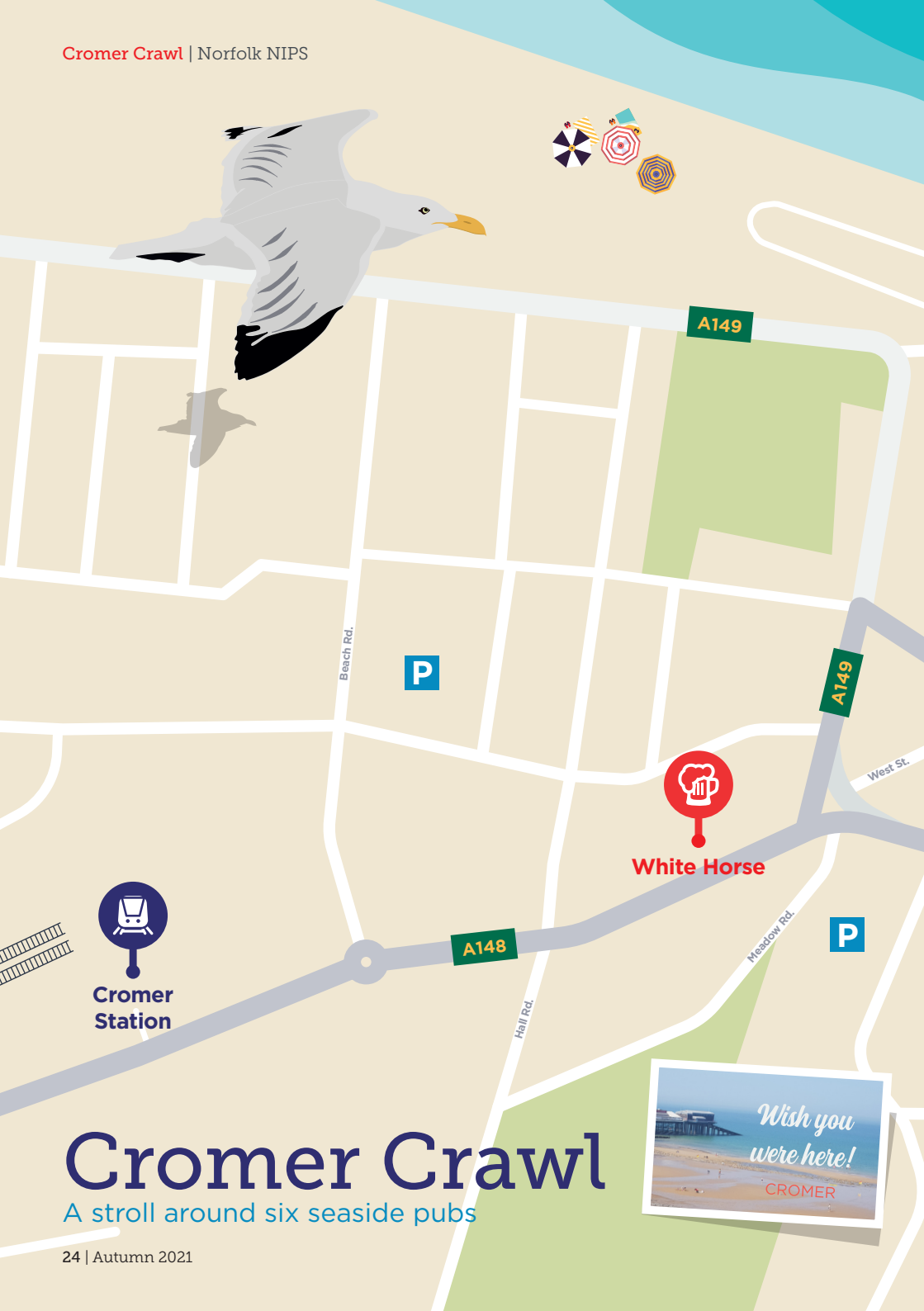
range of great-looking snacks is also available. Plenty of seating inside and tables outside on the pavement.

Last but not least, the **Red Lion Hotel**, on the sea front is probably the best-known of Cromer's real ale pubs, with a huge array of handpumps in the front bar, serving up to ten beers from Green Jack, Moon Gazer, Mr Winter's, Grain and Lacons, as well as several ciders. There's outside seating at the rear, both open and covered, and of course as a hotel there's accommodation and food served. A last pint of Trawlerboys in the afternoon sun was superb!



While the selection of ales in many pubs, not just in Cromer, may appear a little conservative, we have to remember that pubs have just suffered the worst crisis in their history, and need to be careful with what they offer – all the beers we drank were in excellent condition, and we had a great day out, topped off with fish & chips at No.1 by the pier.





Cromer Crawl

A stroll around six seaside pubs





Cromer Pier

New St

Corner St

Kings Head

Wellington Pub and Smokehouse

Garden St

Jetty St.

Tucker St.

Red Lion

Albion

Surrey St.

Gangway

The Gangway

Hans Pl.

Bond St.

A149

A1469